

COMMUNITY NOTICES

Night Disco

Come as your favourite Character

Saturday 30th March 2019
6.30pm to 8.30pm
Spot Prizes
Pizza and other snacks
for sale on the night.



Entry \$10
Skate/Blade Hire: Free
Spectators: Free
Fundraising for our National Skaters.

Upper Hutt Roller Skating Club
4A Railway Avenue
Phone: 022 682 4517
skatewellington@yahoo.co.nz
Www.facebook.com/upperhuttrollerskatingclub



UPPER HUTT HOCKEY

FUN DAY

SUNDAY 24TH MARCH
1 PM - 3 PM
MAIDSTONE HOCKEY TURF

SAUSAGE SIZZLE
LUCKY PLAYER PRIZE DRAW
GEAR AVAILABLE FOR USE

St Margaret's Church, Dunns St, Silverstream

is holding another of their themed events on Sat 27th April from 10am -1pm. The **Winter Warmers Fair** will include a large variety of new and used clothing, Manchester, marmalades, preserves, books, toys, café, prepared foods and a variety of crafts.

We will make the coming winter more **Bearable** with **Wearable** clothes and lots of **Edible** goodies.

Come and enjoy and please bring your own bags

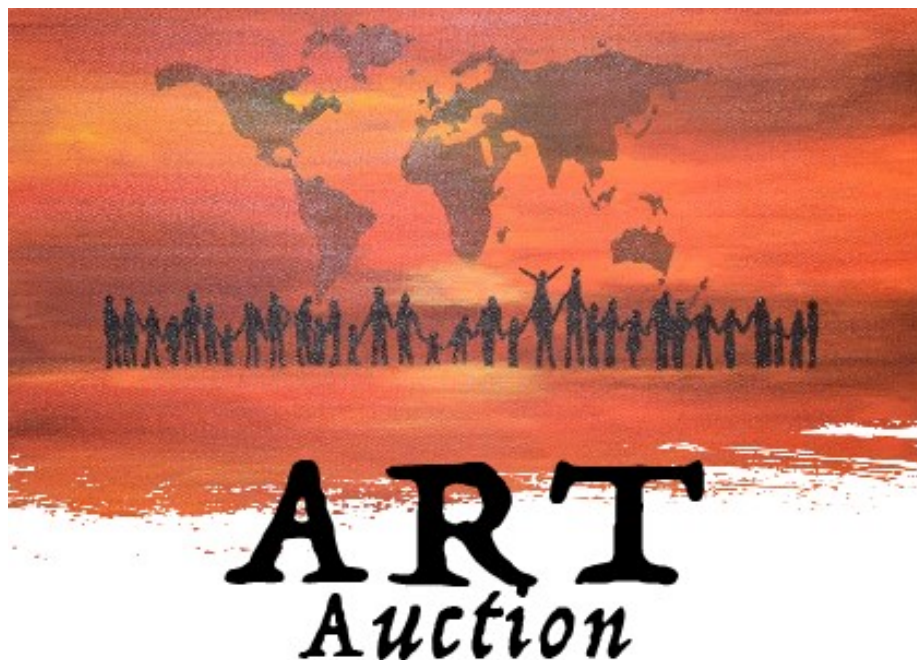
Artrageous Kids Programme: 15 – 26 April 2019 [BOOK ARTRAGEOUS APRIL](#)

Venue: Poneke Dojo, Prince of Wales Park, Salisbury Tce, Mt Cook, Wellington

8.30am–3:00pm \$69 and after care 3:00pm–5.15pm \$15

Aimed at children aged 5–12 years. Our classes provide a space for all children to explore at their own pace; chaotic or careful, gingerly or with gusto, tiptoeing or tromping. Our aim is to draw out their creativity, not stuff things in! **Bookings essential.**

» [View the programme.](#) [BOOK NOW!](#)



Thursday 4 April - HIBS Auditorium

Viewing from 5:30pm
Silent auctions close at 7:00pm
Live auction starts at 7:00pm

The 2019 International Service team is hosting an art showcase.
HIBS is pleased to be collaborating with Rimutaka Prison on this fundraising initiative.

Canvases, sketches and wood carvings will be available for sale on the evening by either fixed price or auction.

Entry by Donation

All funds raised will go towards the HIBS International Service project in Vietnam.

Any queries contact Alan Watts at: awatts@hbs.school.nz



DEPARTMENT OF
CORRECTIONS
ARA Kaitiaki o Te Kaitiaki



FREE SLIDES
SPOT PRIZES
SPA · INFLATABLES
LIVE DJ 7.30 – 9.30

AQUA BEATZ

FRIDAY 22 MARCH
7-10PM

H2O XTREAM, CORNER BLENHEIM & BROWN STREETS
UPPER HUTT

HELL
X

FOR MORE INFO, CONTACT US ON 04 527 2113
OR VISIT h2oxtream.com
f / H2OXtreamAquaticCentre



HUTT VALLEY BASKETBALL



U15 Basketball Camp

SATURDAY 9TH MARCH

BOYS & GIRLS

WALTER NASH STADIUM

9.30am - 12pm

COST:\$10

unless you have paid
in the previous trial

VISIT

www.huttvalley.basketball
for more information



2019 MATHS CHALLENGE

Registrations Now Open



Date: Monday 15 April

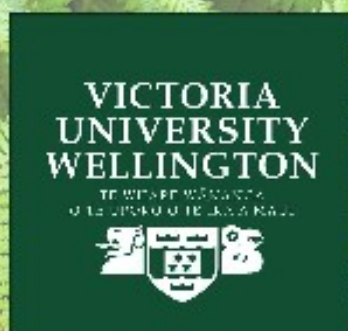
Time: 9am-3pm (Approx.)

Venue:

Alan McDiarmid Building

Kelburn Campus

Victoria University of Wellington



Contact your teacher
or visit us here:



Stopping & parking near a school

Everyone is only here for "a minute or two", but where and how you stop or park matters.



Stopping on broken yellow lines, across a driveway, on a bus stop, and double parking are illegal and risky manoeuvres. They endanger children and other pedestrians and you may get fined if you choose to:

- Stop or park on broken yellow lines \$60*
- Double park \$60*
- Stop or park in front of or within 1 metre of a vehicle entrance or driveway \$40*
- Stop or park on the footpath \$40*
- Stop or park on or near a pedestrian crossing . . . \$60*
- Stop or park in a way that is inconsiderate to other road users, including pedestrians. \$60*

Please put children's safety first at all times.



Safer School Runs



When children arrive at or leave school, how and where you stop, park and drive can protect them or put them in danger.

Drivers and children need good visibility to be able to see each other.

Parking restrictions are in place near schools for a reason - to protect our tamariki.

***CHAOS at the school gate...
are you part of the problem?***

***Choose to stop or park safely
and legally every time.***



Support Your School

Below are some local businesses who support and give donations to Silverstream School when parents/caregivers, friends and family, use their Business and mention SILVERSTREAM SCHOOL.

Supporting success in your school.

If you are a parent, staff member or member of the school community and you draw down a new ASB home loan of \$250,000 or more, ASB will donate to your chosen participating school:

\$500

ASB lending criteria and terms apply. Fees may apply. To be eligible for this donation your new home loan application must be received, approved and then documented in a facility agreement, along with the completion of a school donation voucher, between 1 January 2017 and 30 June 2017. A minimum of 20% equity is required in the security property provided to ASB. This home loan offer is only available on loans secured by an owner-occupied residential property. Only one donation will be given per customer. Donations will be made by ASB on behalf of the customer to the chosen school upon full draw down of the new home loan. This offer excludes loans for business purposes and bridging.

ASB Bank Limited 56380 16785 0117

ASB

Supporting success in your school.

If you are a parent, staff member or member of the school community and you draw down a new ASB home loan of \$250,000 or more, ASB will donate \$500 to your chosen participating school. Visit asb.co.nz/schoolbanking for full details.

ASB lending criteria and terms apply. Fees may apply. To be eligible for this donation your new home loan application must be received, approved and then documented in a facility agreement, along with the completion of a school donation voucher, between 1 July 2017 and 30 June 2018. A minimum of 20% equity is required in the security property provided to ASB. This home loan offer is only available on loans secured by an owner-occupied residential property. Only one donation will be given per customer. Donations will be made by ASB on behalf of the customer to the chosen school upon full draw down of the new home loan. This offer excludes loans for business purposes and bridging.



\$150 SCHOOL DONATION

Thinking of buying a new home, purchasing your first or wanting to review you current home loan structure?

Contact Matt Ingerson your local mortgage and insurance broker.

Matt offers a comprehensive mortgage broking service including advice on health, life and disability insurance.

If you complete a new mortgage, mortgage refinance or complete a health, life or disability product through Matt, Silverstream School will receive a \$150 donation.

Matt Ingerson

Mortgage & Insurance Advisor



MI MORTGAGES LTD

P 04 212 3394 **M** 021 304 020

E matt@ingersonfs.co.nz

www.ingersonfs.co.nz



Peter Cowie

Mobile Mortgage Manager

\$400 for every successful home loan referral!!

Mention Silverstream School when you call Peter Cowie and for every successful ANZ Home or Business Loan \$50,000 or over (including home loan top up) drawn down, the school will receive approximately \$400 of purchasing power at the ANZ Awards Centre.

Included in the wide range of products available are awesome sports gear and technology equipment.

Call Peter anytime on 04 436 5605 Or 027 243 5935

Email peter.cowie@anz.com



MENTION SILVERSTREAM SCHOOL

**AND SHOE CLINIC WILL GIVE A \$10
DONATION TO OUR SCHOOL.**

**LAST TERM WE RECEIVED A \$60
DONATION**

FROM SHOE CLINIC LOWER HUTT.

**THANK YOU FOR ALL WHO SUPPORTED
OUR SCHOOL!**

Jainand Kumar

027 453 7373

Call or Text
Your Local Specialist

Synergy Realty Group Limited
Licensed Real Estate Agents REAA 2008



www.synrg.nz
www.facebook.com/remaxwellington



\$300 SCHOOL DONATION

IT'S EASY TO HELP OUR SCHOOL GET CASH.

**HERE'S A SIMPLE
WAY TO GET CASH
FOR YOUR SCHOOL**

**NEW AND
IMPROVED**



**support
your
school**
.co.nz

We've enrolled with the Warehouse Stationery Support your School programme.

We need your help – simply nominate SILVERSTREAM SCHOOL at the checkout whenever you shop and our school will earn cashback.

Find out more at
supportyourschool.co.nz



**warehouse
stationery**